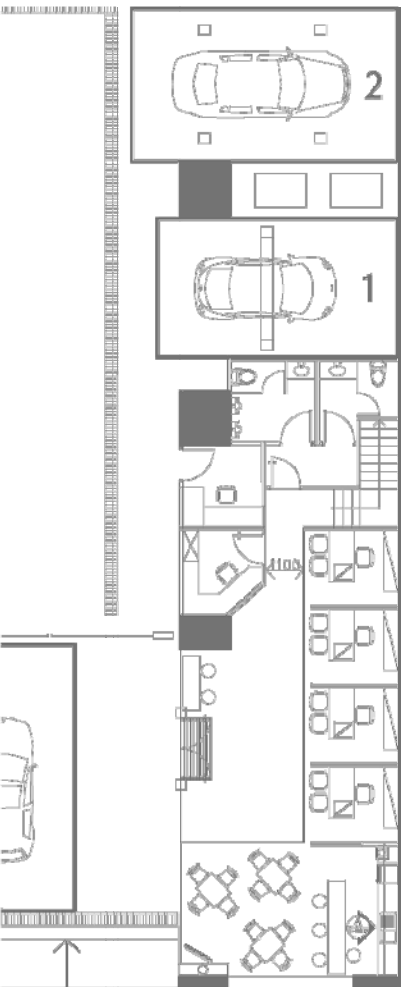




In quarter three 2009 Artlink put wheels to motion providing turn-key service for the renowned manufacturer Volkswagen VW.

The VW service centre design brief drew particular attention to work-flow and space efficiency. The drive-in reception is spacious, and has adjacent consultant desks that connect to a comfortable customer lounge and coffee bar. There are ten state of the art maintenance bays within the 15,000 sq ft facility. Artlink positioned VW's hi-tech library, warranty parts cache and essential service supplies against a core wall, the orientation serves both sides of the service centre.



Volkswagen

At the rear of the facility the corporate area has a cluster of manager offices, support staff desks and breakout area. In the final rinse-off, the car-wash area is very visible and rightly positioned for effortless maneuvering of VW vehicles. Artlink Design transformed a typical Hong Kong industrial building into a neat, functional and attractive service and work environment.

